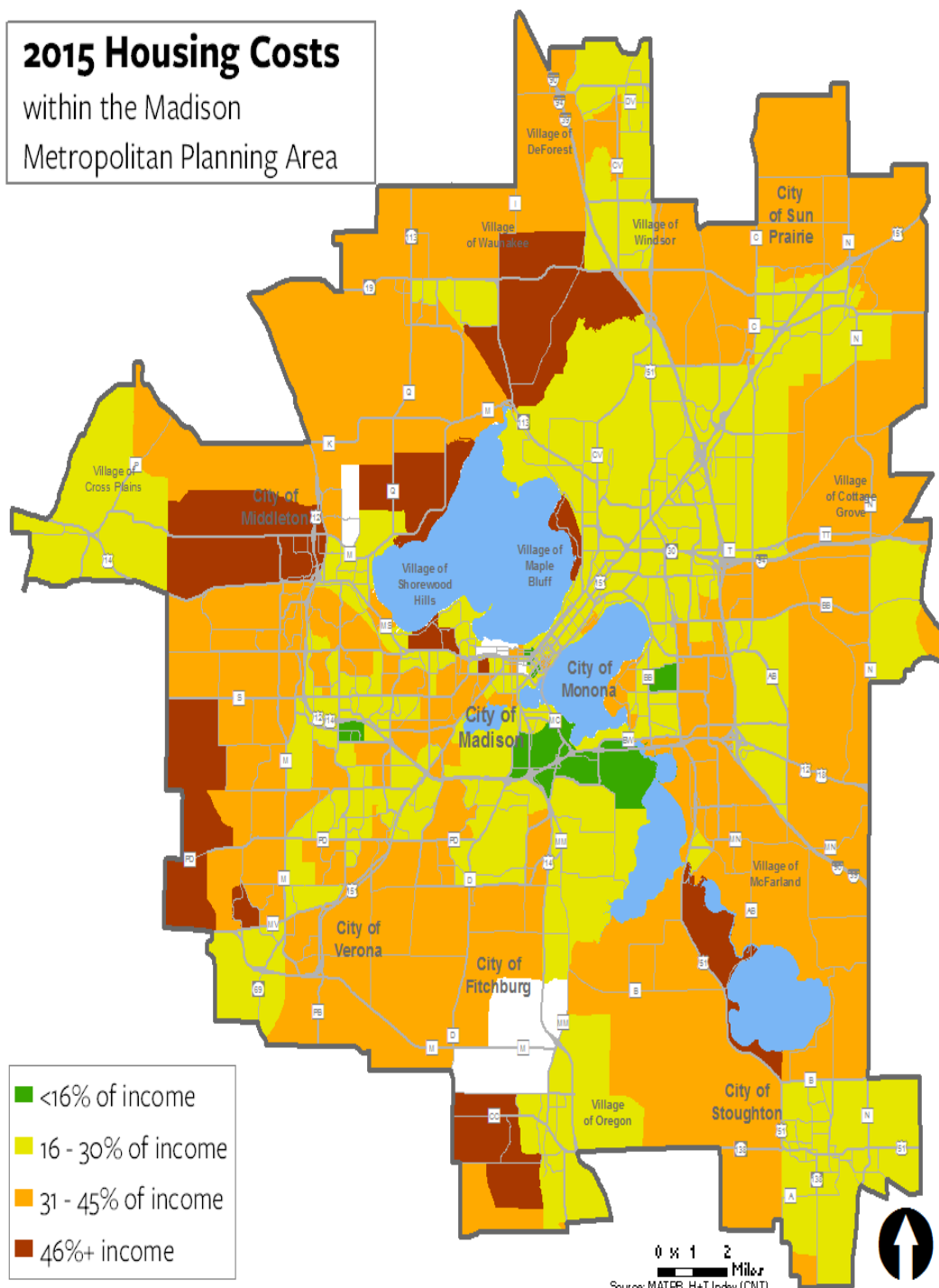


Housing + Transportation (H+T) Index

- Developed to account for fact traditional definition of affordable housing (cost < 31% of income) neglects families' 2nd largest expense, transportation
 - In 2015, typical Dane County household spent \$19,000/yr. on housing and \$13,000/yr. on transportation
- H+T Index provides more holistic view of housing affordability using data on avg. cost of both housing and transportation
- Transportation cost based on car ownership, miles driven, and mode to work data
- Combined housing + transportation cost < 46% of income = affordable

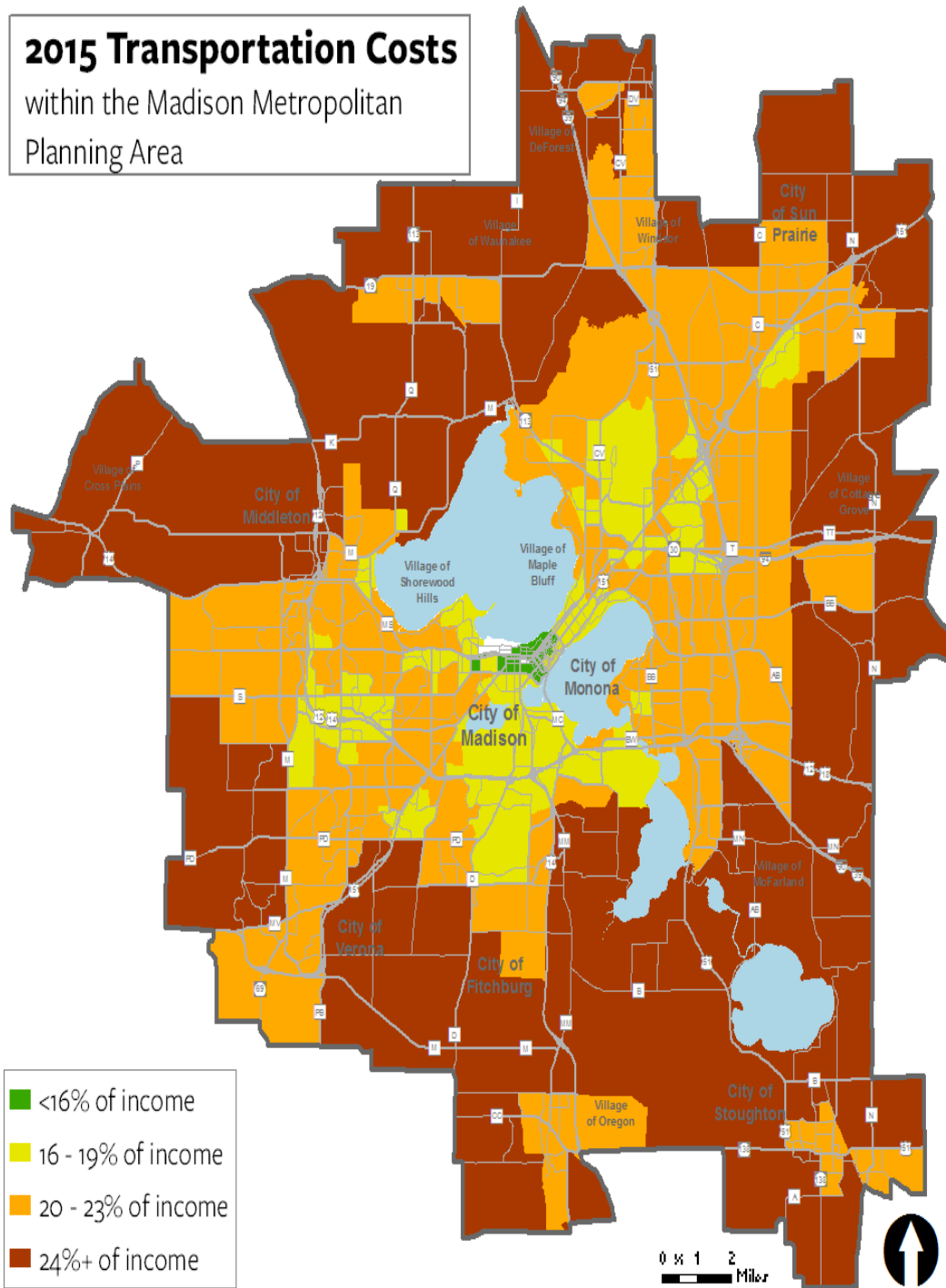
2015 Housing Costs

within the Madison
Metropolitan Planning Area



2015 Transportation Costs

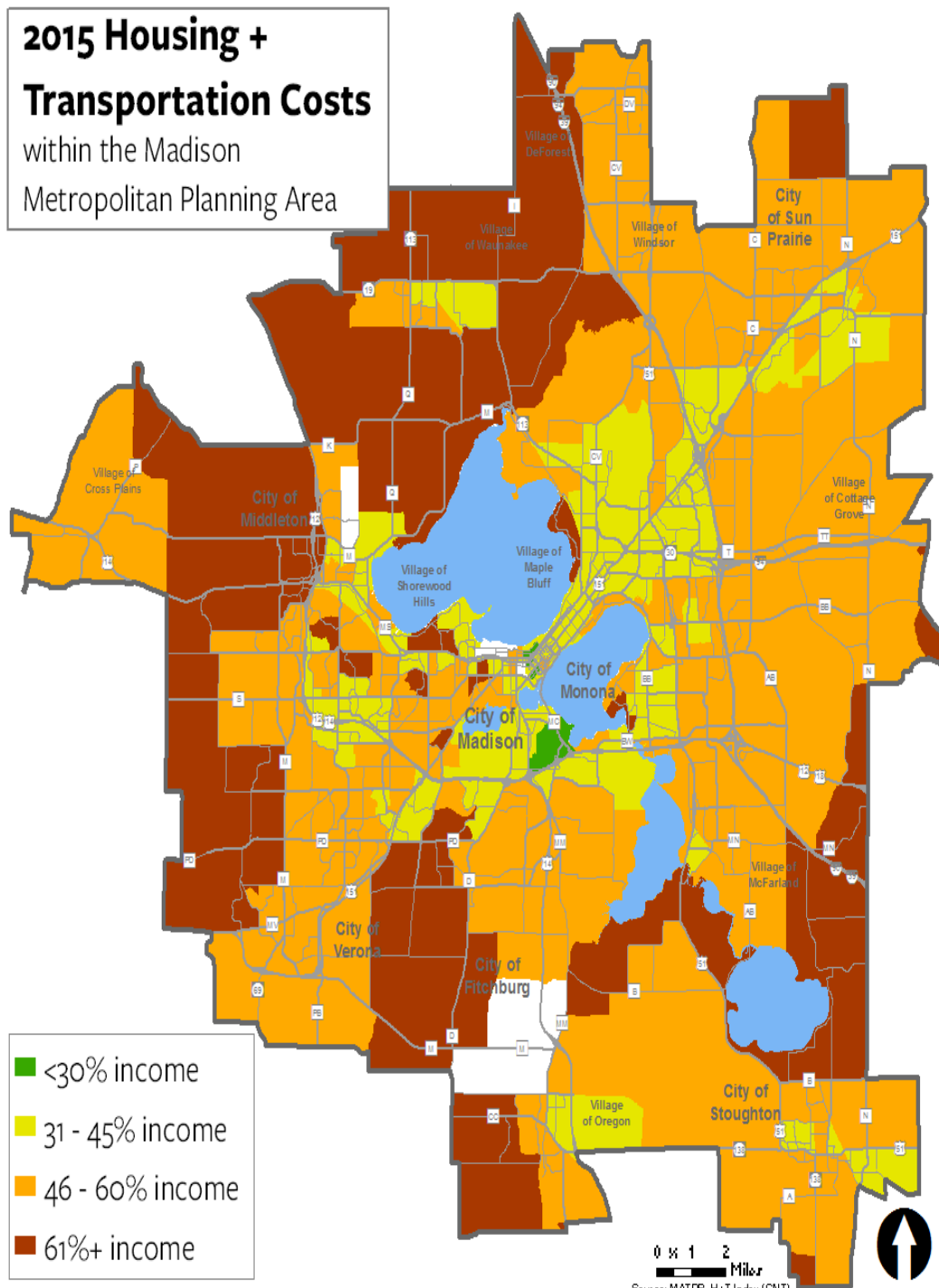
within the Madison Metropolitan
Planning Area



0 1 2 Miles
Source: MATFB, H+T Index (CNT).

2015 Housing + Transportation Costs

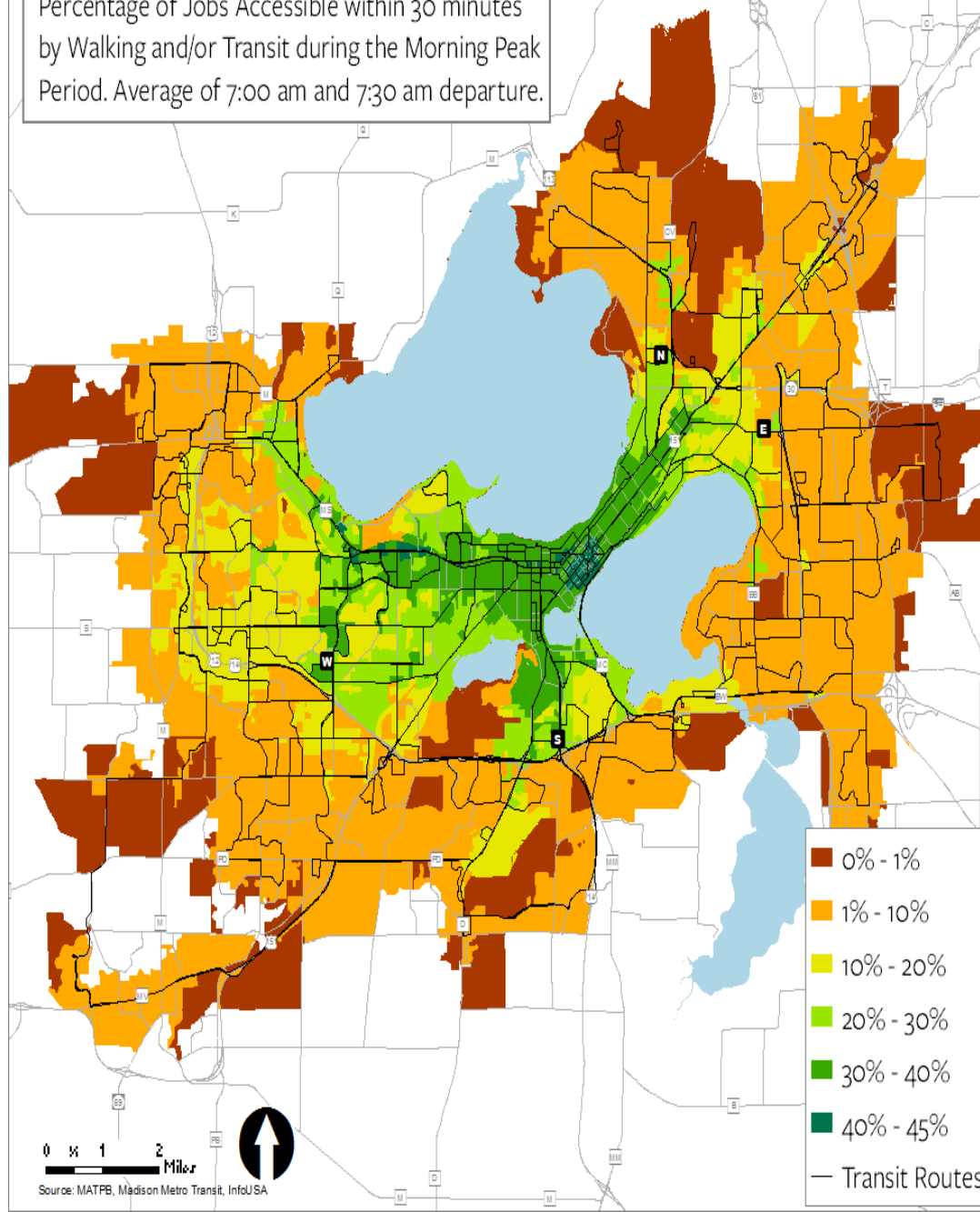
within the Madison
Metropolitan Planning Area



0 1 2 Miles
Source: MATFB, H+T Index (CNT)

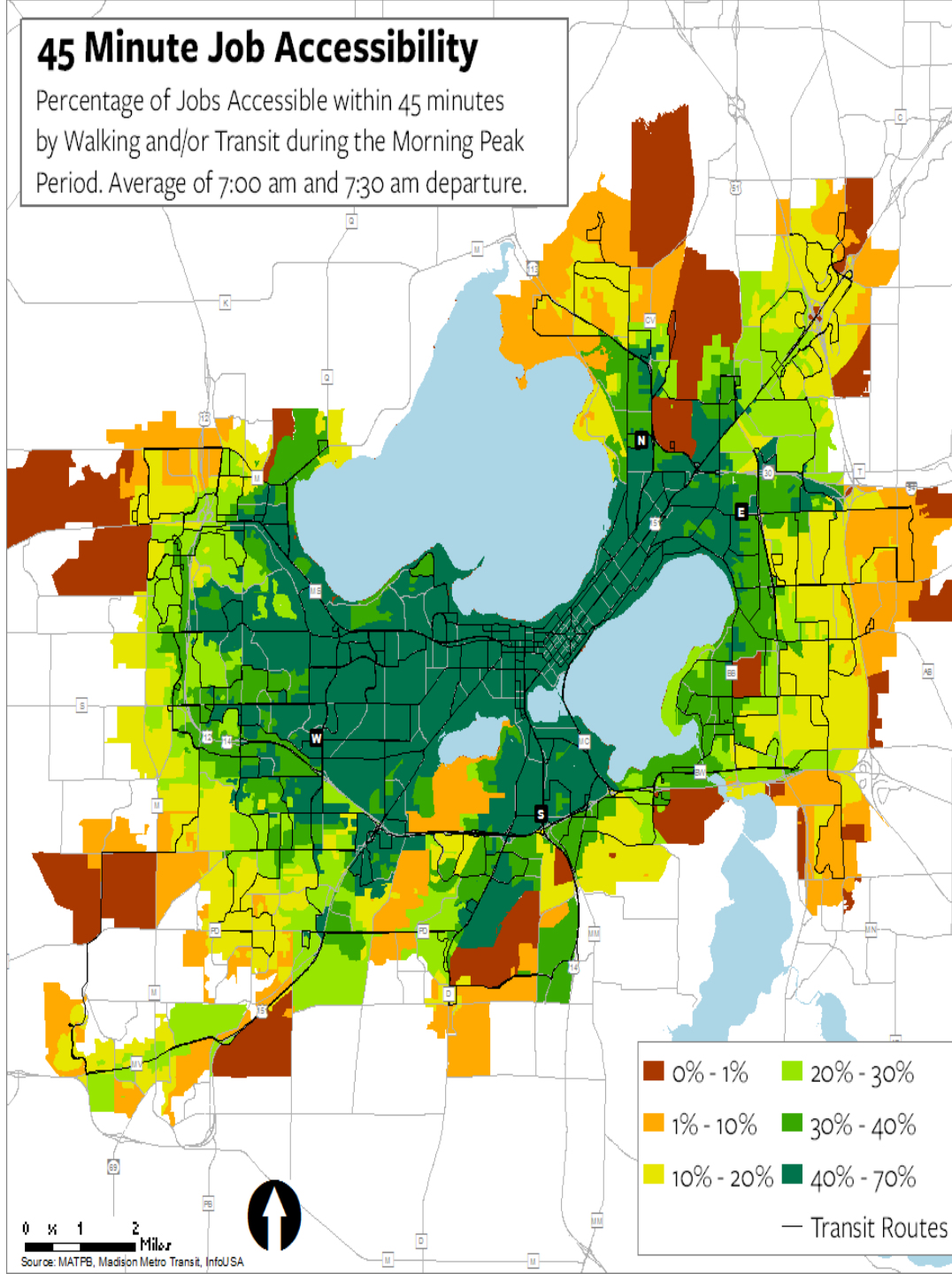
30 Minute Job Accessibility

Percentage of Jobs Accessible within 30 minutes
by Walking and/or Transit during the Morning Peak
Period. Average of 7:00 am and 7:30 am departure.



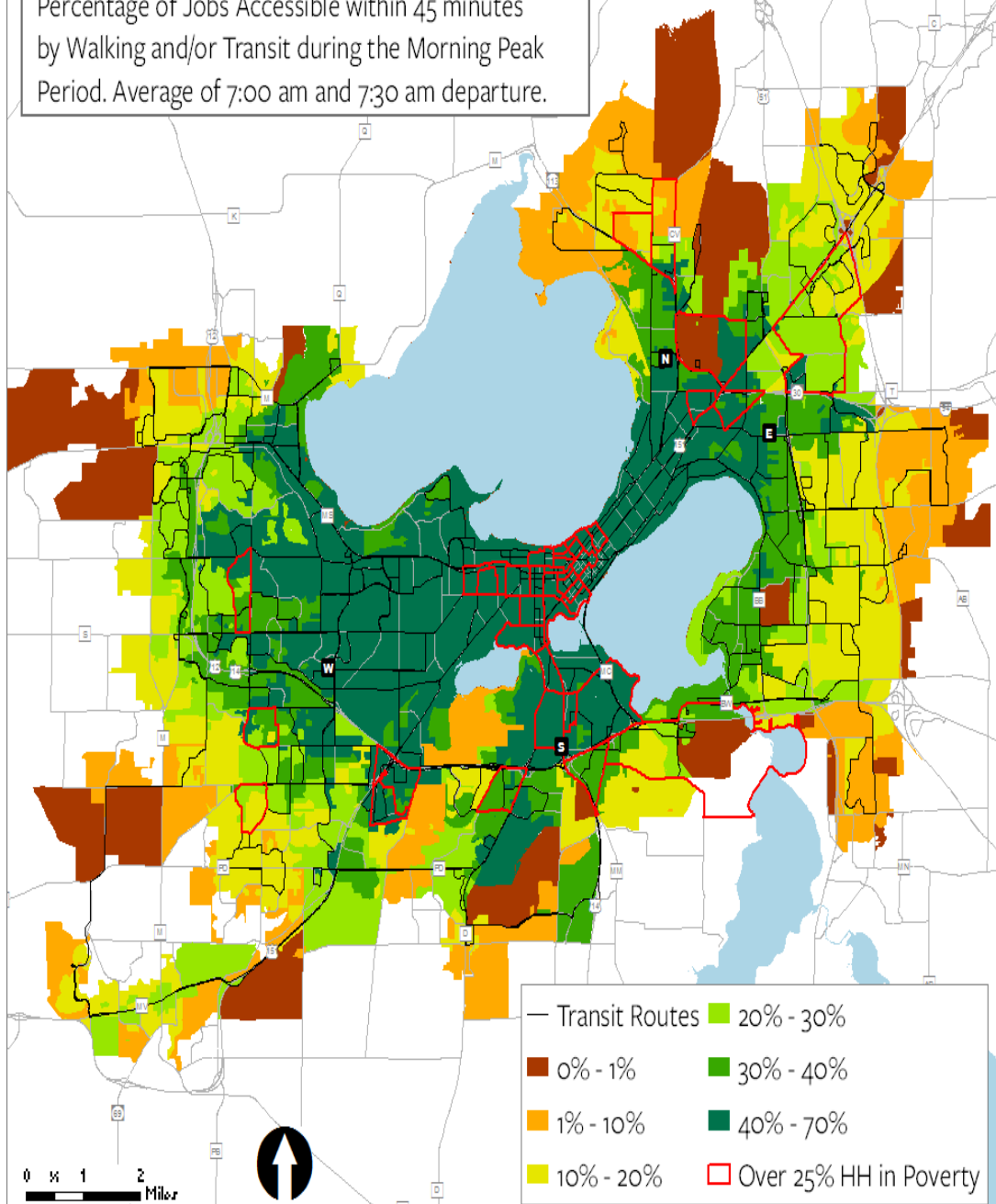
45 Minute Job Accessibility

Percentage of Jobs Accessible within 45 minutes
by Walking and/or Transit during the Morning Peak
Period. Average of 7:00 am and 7:30 am departure.



45 Minute Job Accessibility

Percentage of Jobs Accessible within 45 minutes by Walking and/or Transit during the Morning Peak Period. Average of 7:00 am and 7:30 am departure.



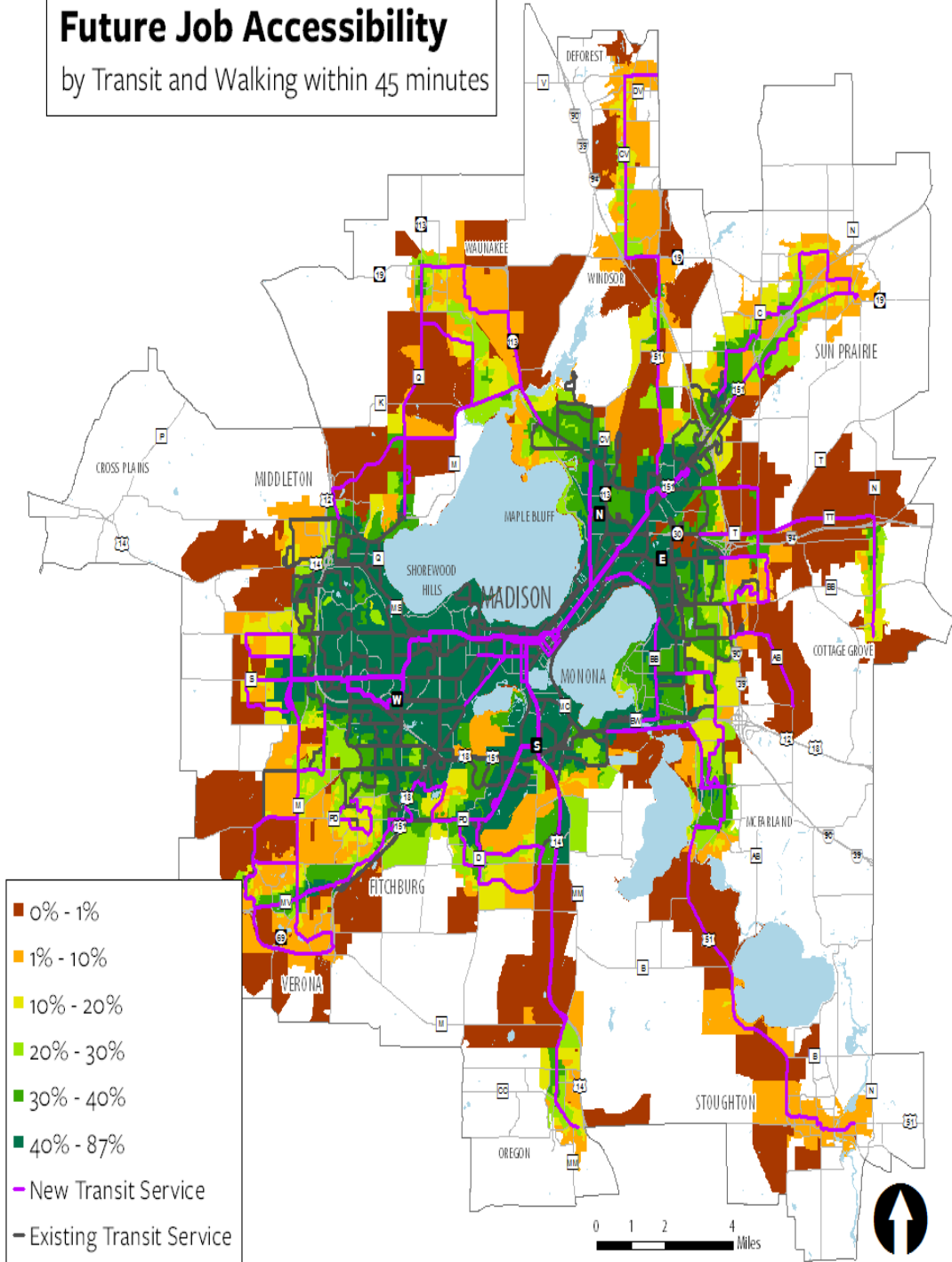
0 1 2 Miles



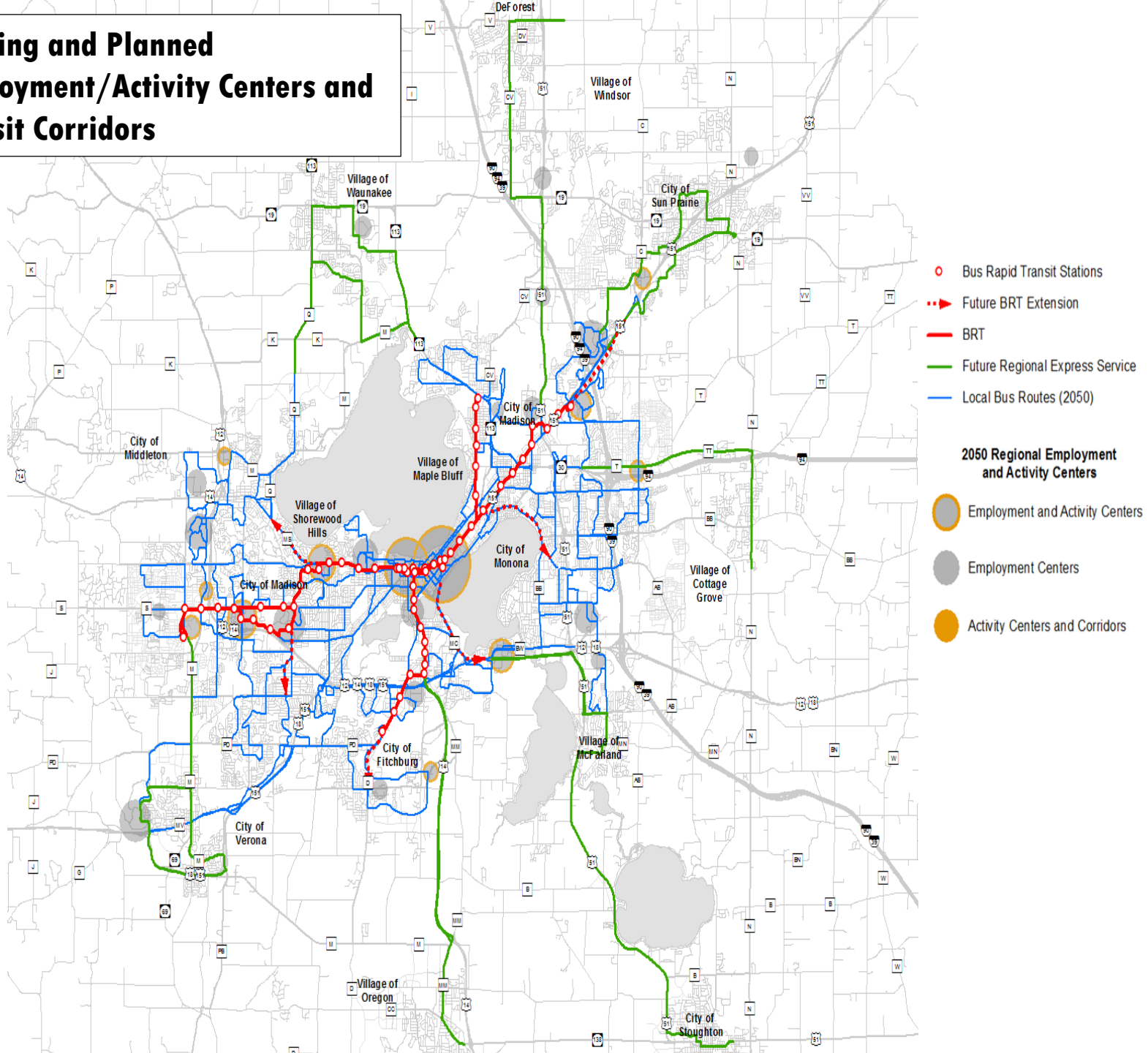
Source: MATPB, Madison Metro Transit, InfoUSA, 2010-2014 ACS Table B17017

Future Job Accessibility

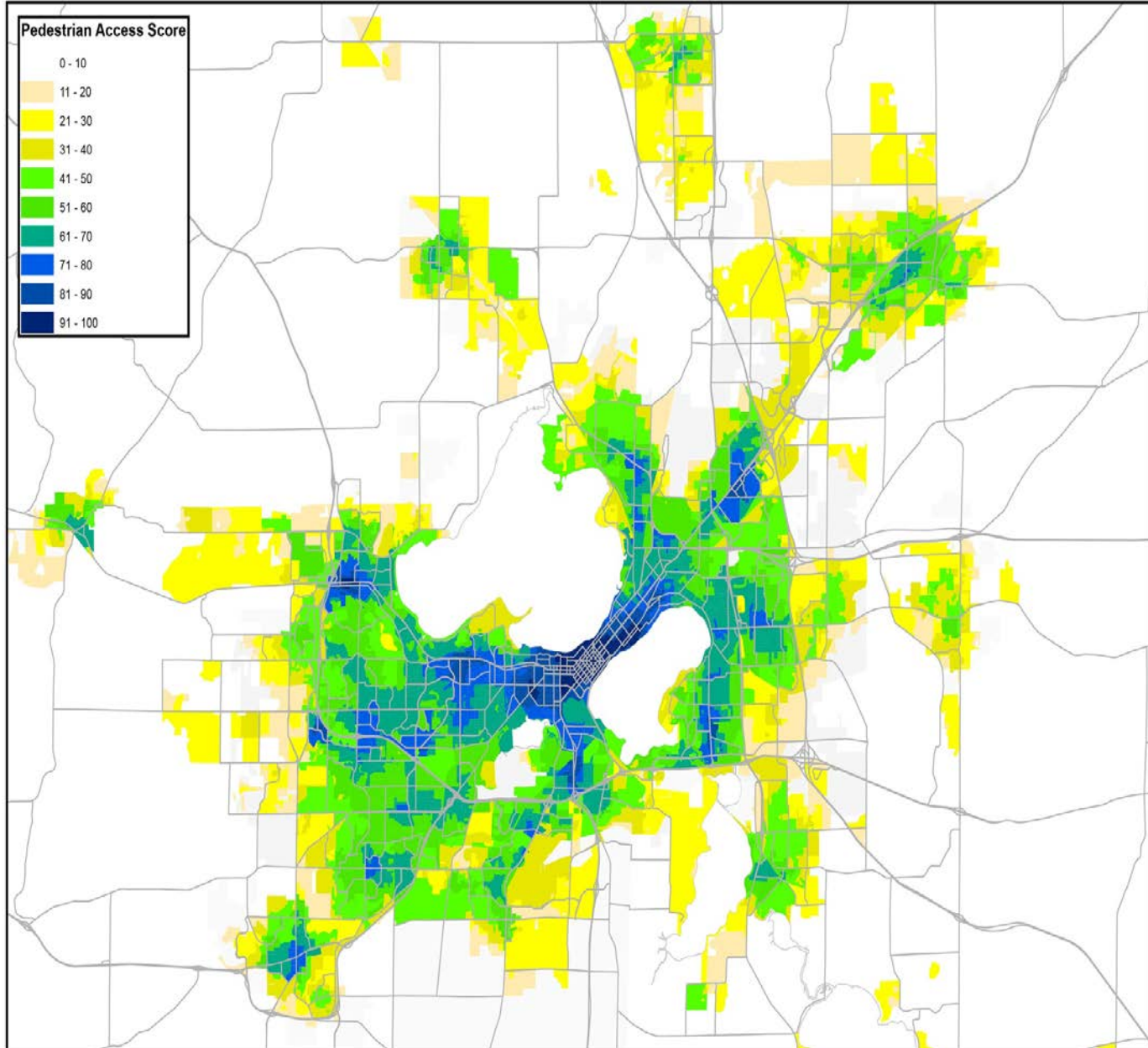
by Transit and Walking within 45 minutes



Existing and Planned Employment/Activity Centers and Transit Corridors



Pedestrian Accessibility

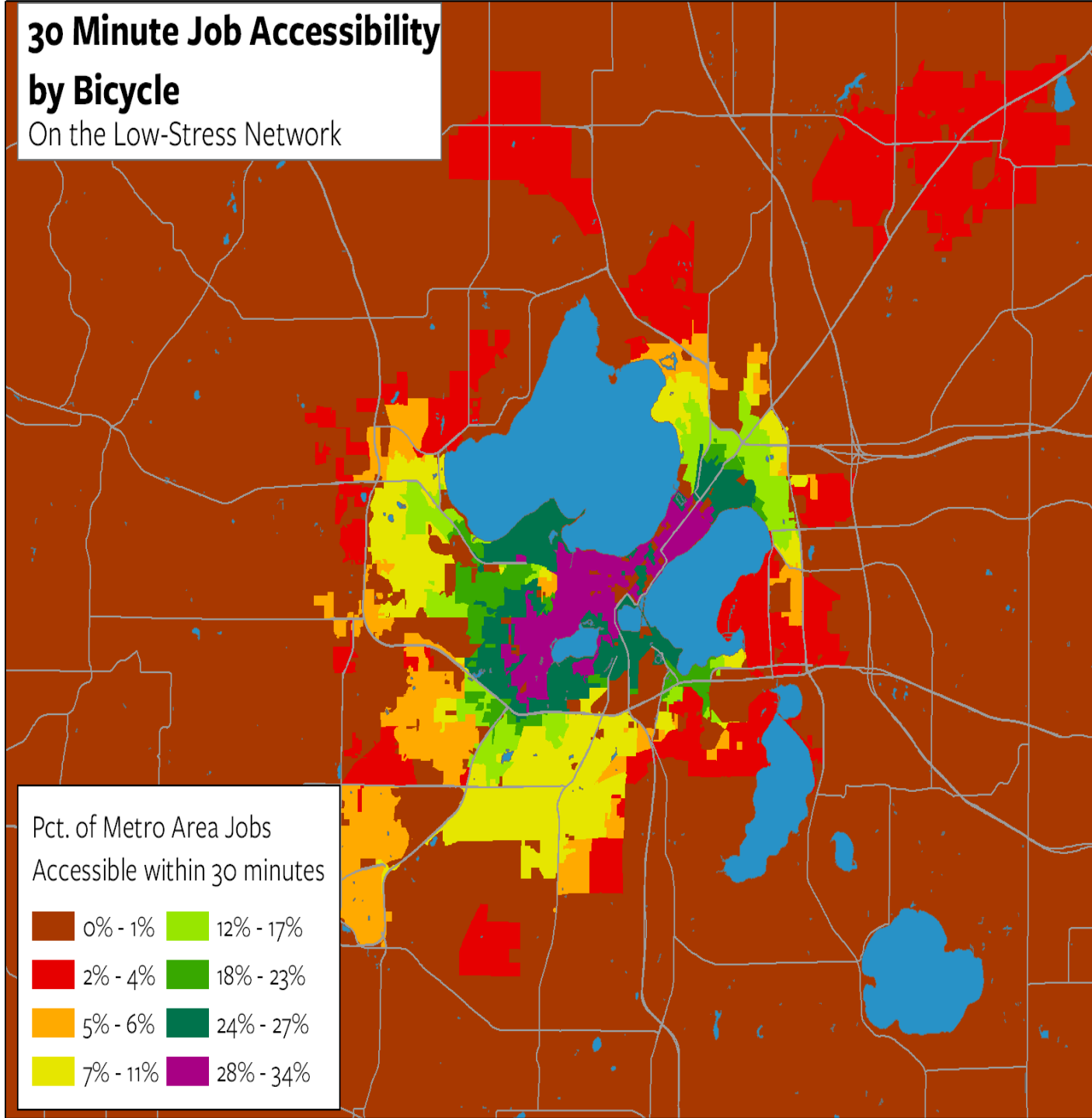
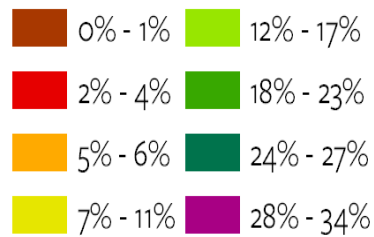


30 Minute Job Accessibility

by Bicycle

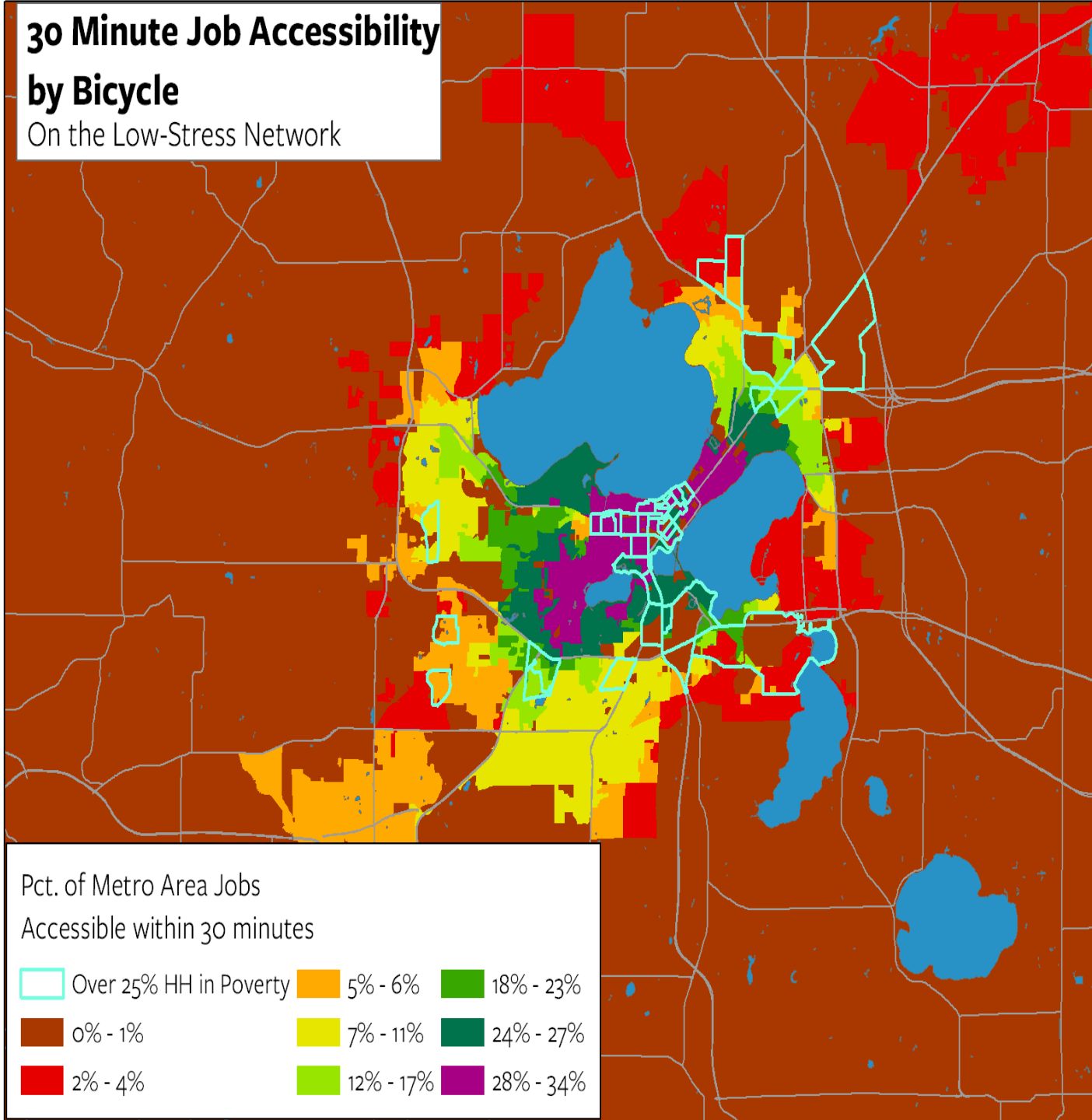
On the Low-Stress Network

Pct. of Metro Area Jobs
Accessible within 30 minutes



30 Minute Job Accessibility by Bicycle

On the Low-Stress Network



Bill Schaefer, Director/Planning Manager
Madison Area Transportation Planning Board
wschaefer@cityofmadison.com

