



Dane County Senior Housing Crisis:

What You Need to Know About Dane County's Senior Population



Cheryl Batterman, MPA
AAA of Dane County Manager
(608) 261-9789
batterman.cheryl@countyofdane.com
<https://aaa.dcdhs.com/>

Mission: To advocate for senior adults and enable them to maintain their full potential and enhance their quality of life. To affirm the dignity and value of older adults by supporting their choices for living in and giving to our community. To create and promote opportunities for communication among the entire community.

AAA is part of Dane County Department of Human Services and co-located in the Aging & Disability Resource Center. Direct County services include Elder Benefit Specialists Program and Transportation Services. Contracted services include: Caregiver Program, Case Management, Cultural Diversity Programs, Evidence-Based Health Promotion, Nutrition Meal Program, and Volunteer Programs.



Resource: Dane County Area Agency on Aging

Elder benefit specialists (EBS) are trained to help senior adults who are having a problem with private or government benefits. The program provides free advocacy and legal advice/representation for senior adults (age 60+) residing in Dane County that are faced with benefit, **housing and other disputes or denials**, complications, changes in benefits, claims not paid, and other similar issue groups that have an economic or socially isolating effect on the senior adult.

All referrals to this program go through the Aging & Disability Resource Center.



Resource: Dane County EBS Program

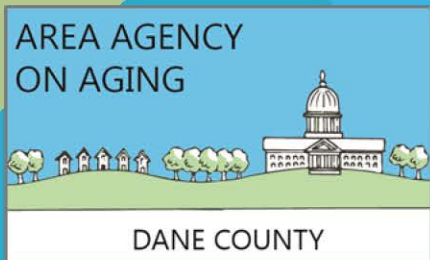
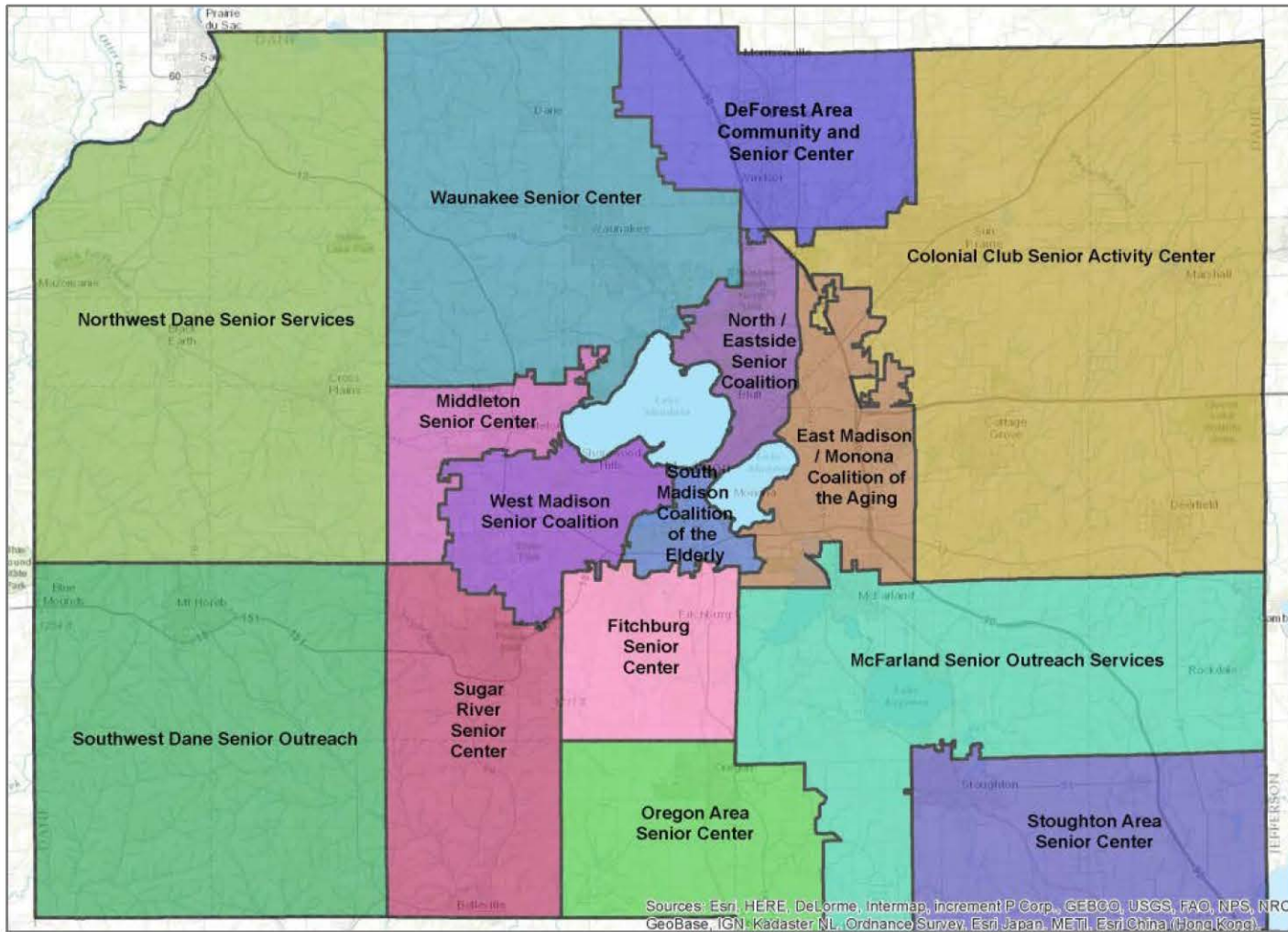
Dane County is fortunate to have a vast network of aging services and resources. Many are interdependent public, private partnerships that are community-based.

In November 2012, Dane County opened an Aging & Disability Resource Center (ADRC) – which provides short-term Information & Referral services. AAA & ADRC work collaboratively to meet the short and long-term needs of seniors in Dane County.

Unique to Dane County are geographic service areas that are assigned to 15 Senior Centers or Focal Points. AAA contracts with the Focal Points to provide programs and services to enable senior adults to live safely and independently in their own home.



Resource: Aging Network

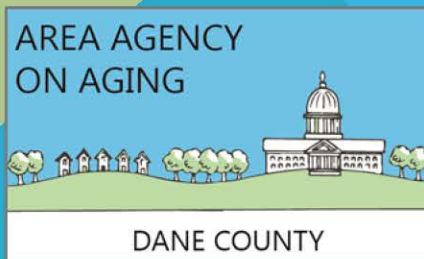


Resource: Senior Focal Points



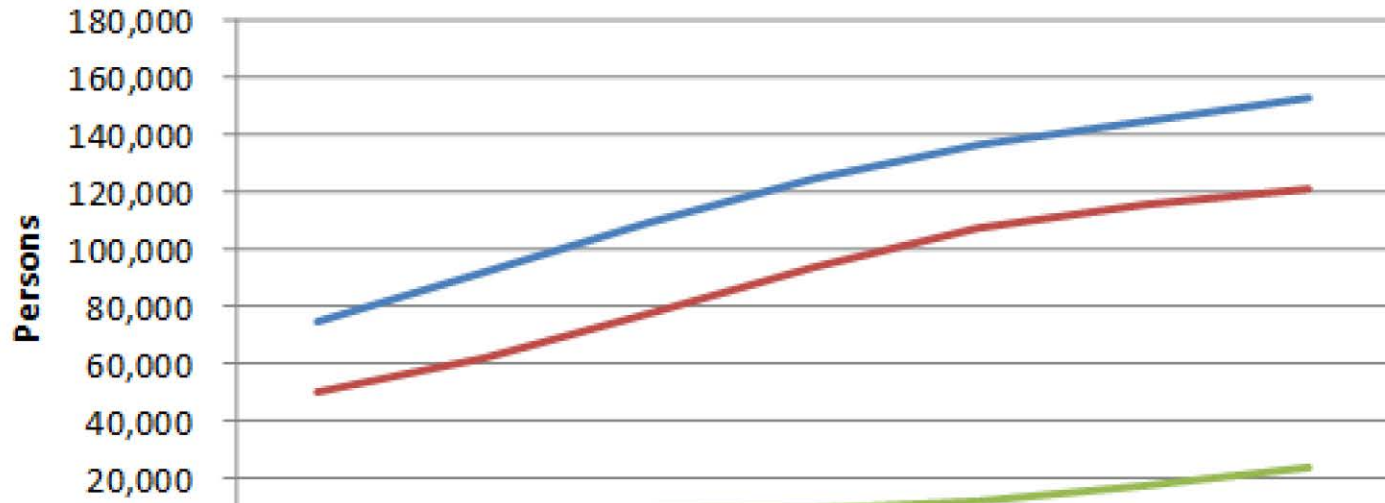
Case Managers assess the needs of the client and the client's family (when appropriate) and arrange, coordinate, monitor, evaluate, and advocate for multiple services to meet specific complex needs and preferences

- They conduct home visits to assess the needs of each senior adult and then develop individualized service plans for ongoing/ long-term services (**the term "home" includes houses and apartments but not nursing homes or assisted living facilities**)
- They provide professional assistance in a confidential manner



Resource: Case Management

Dane County Population Projections for Persons Age 60 and Older by Age Group and Year



	2010	2015	2020	2025	2030	2035	2040
Age 60+	74,925	91,700	108,920	125,000	136,500	144,540	153,070
Age 65+	50,144	62,160	78,020	93,500	107,250	115,490	121,470
Age 85+	7,774	8,600	9,030	9,870	12,540	17,800	23,700

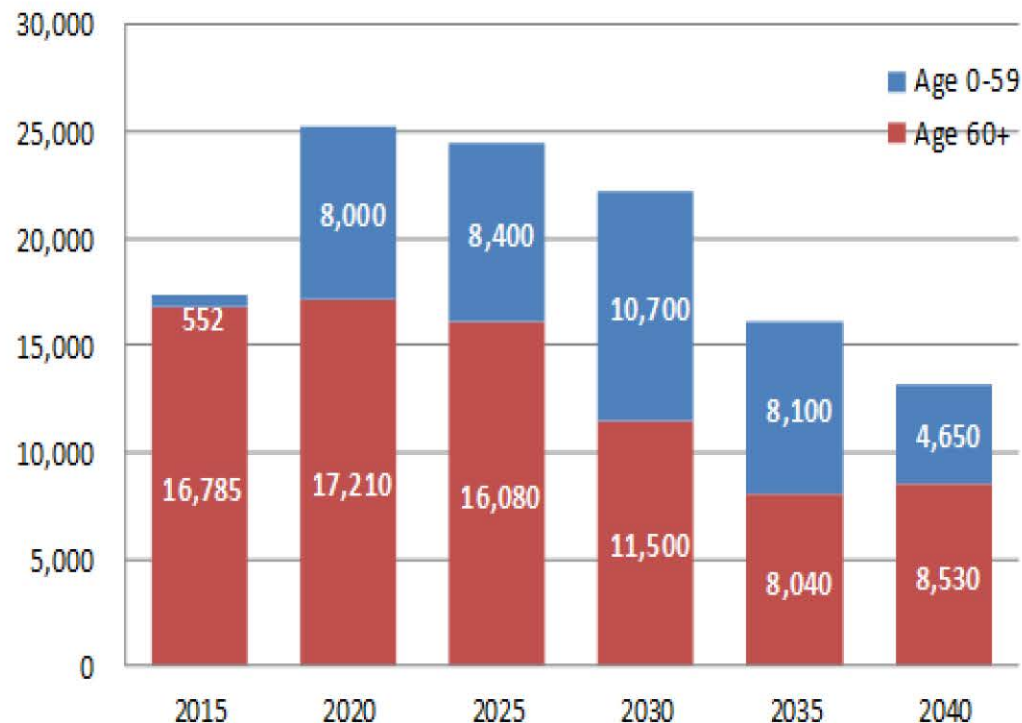
AREA AGENCY
ON AGING



DANE COUNTY

Population Projections

Projected Population Growth in Dane County in Five Year Bins, 2015 to 2040, Age 0-59 vs. 60+



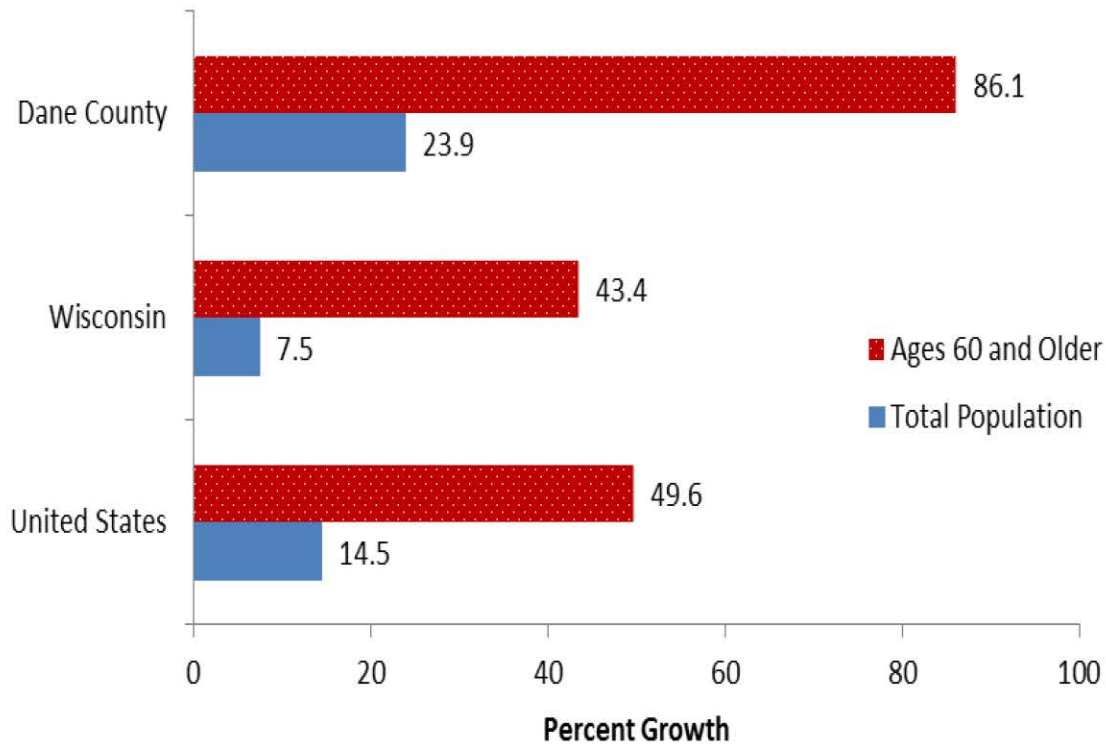
Source: WI-DOA - Demographic Services

As projected, over the next 25 years, on average, 66.2% of the growth in population to Dane County will be those age 60+.



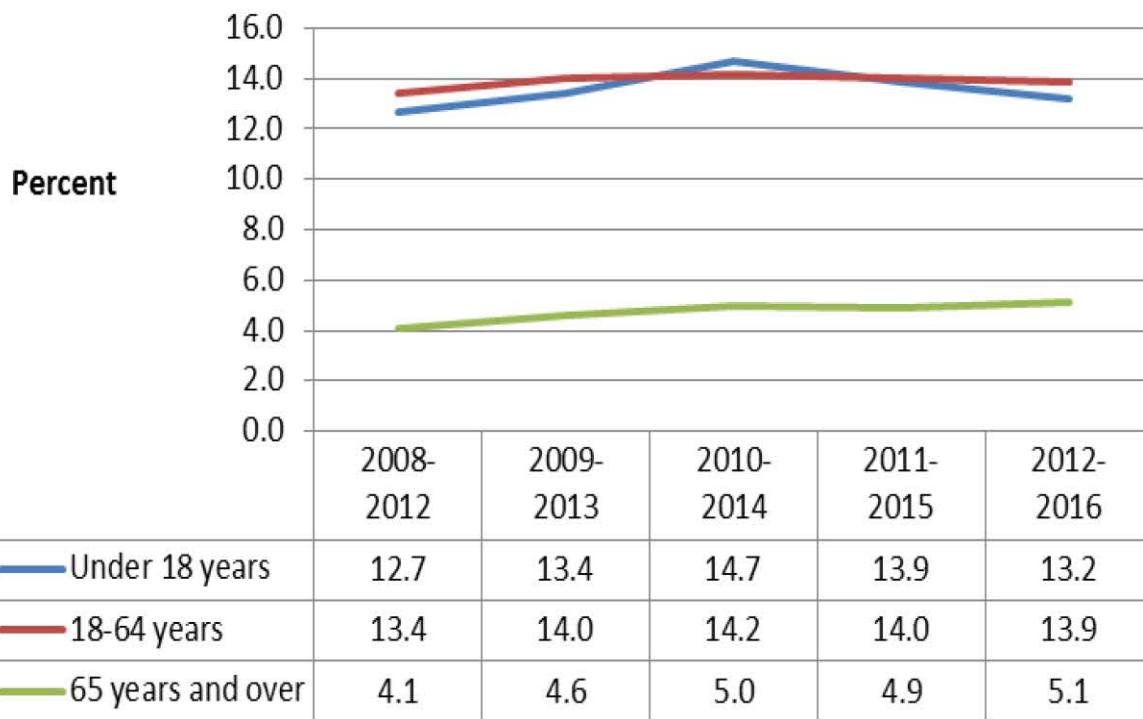
Population Projections

Percent Population Growth 2000-2016: Total Population Compared with Persons Age 60 and Older



Growth: 2000-2016

Poverty Status in the Past 12 Months by Age Group: Dane County

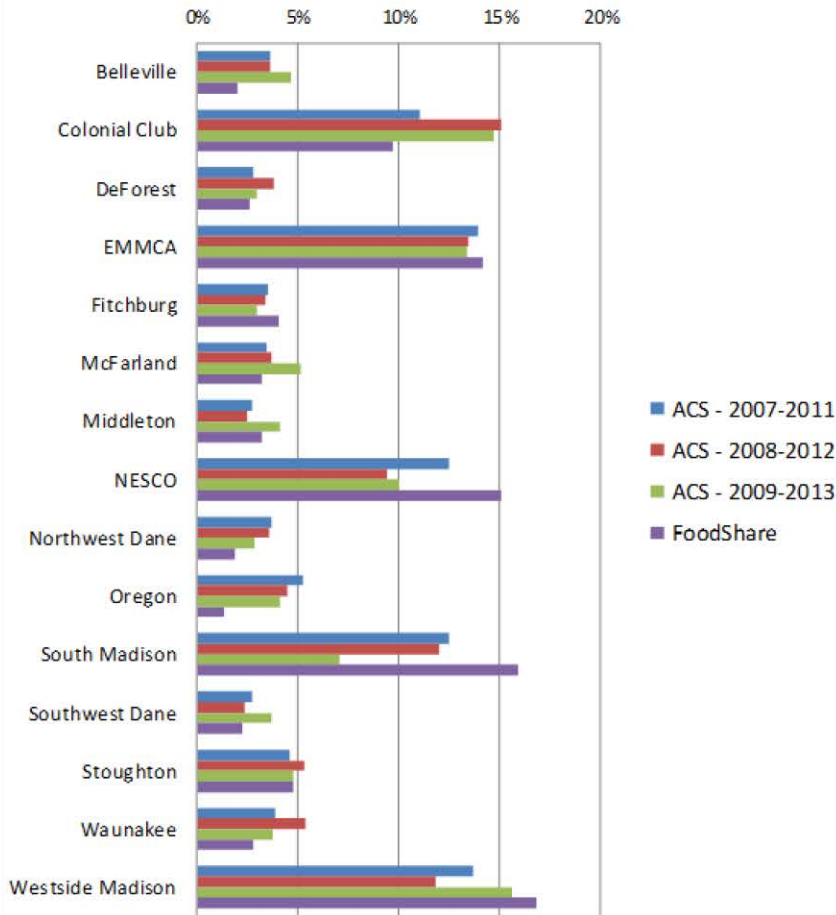


The economic recession experienced in 2008 had a direct financial impact on persons age 65+ in Dane County. Concerns are that this trend will continue as more and more Baby Boomers retire with less assets, thus with financial stability for retirement years.



Poverty

AAA Case Management - Elderly Poverty Data



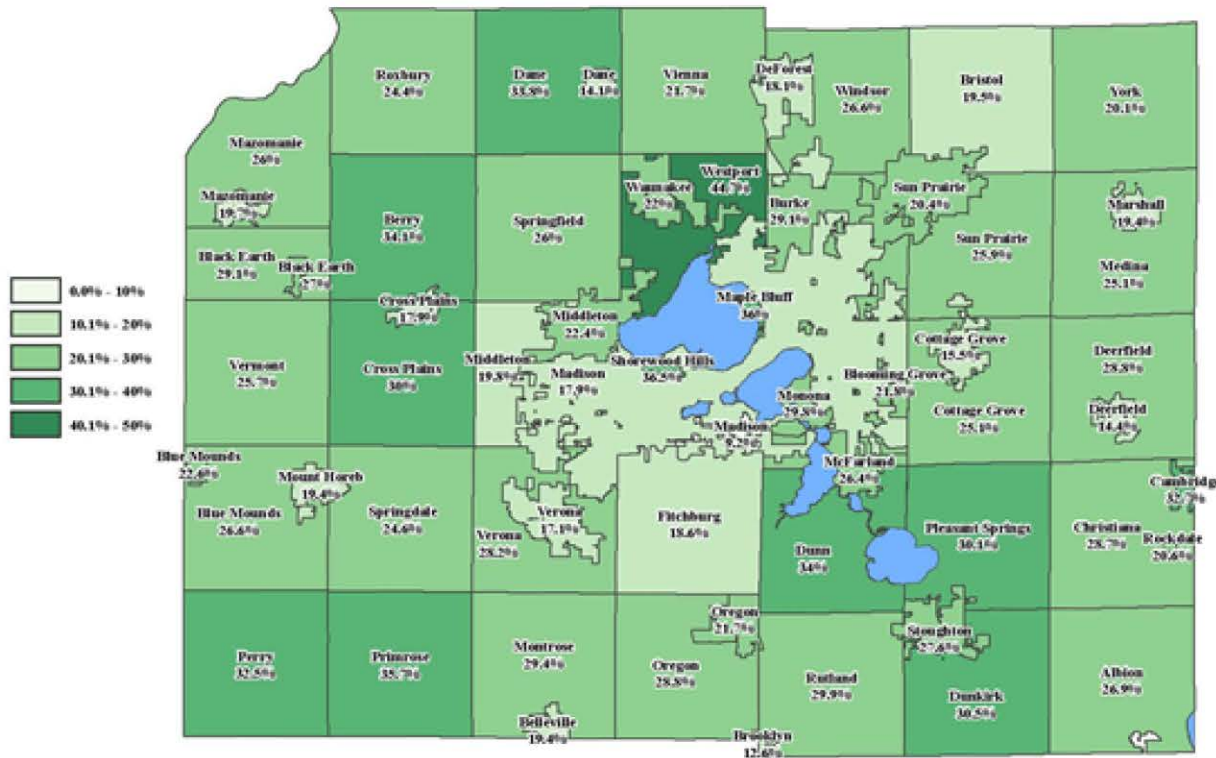
Data can be used to forecast where low-income seniors live in Dane County— Madison and Colonial Club service areas trend higher than other Focal Point Service Areas.



Poverty

Percent of Total Households with Single Person Ages 65 or Older

Source: U.S. Census, 2012-16 American Community Survey 5-Year Estimates



Note: City of Edgerton data has been withheld due to low Dane County numbers of households.

Data can be used to forecast the increased needs of senior adults due to living alone.



Living Alone



“An estimated 90% of the nation’s 48 million adults older than age 65 want to age well in their own homes and communities, and not in institutions such as nursing homes.” (n4a Annual Report, 2017-2018)



Trends



Trends

**NO
VACANCY**



Trends

Affordable housing is a critical need.

MOM Case Manager

We have a person living in a storage locker... no income.

McFarland Case Manager

Available lower cost apartments is something that is very difficult to find without a long wait.

Middleton Case Manager

In a nutshell, the available housing in our area is so non-existent that we most often experience our seniors leaving our community when they have decided to move to senior housing.

Sugar River Case Manager

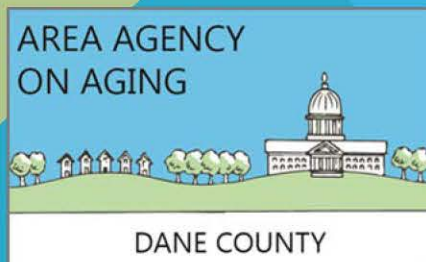


Needs

There is no wrong door!

Contact any of the following:

- Your local Focal Point (Senior Center or Coalition)
- Area Agency on Aging of Dane County
 - (608) 261-9930 or aaa@countyofdane.com
- Aging & Disability Resource Center of Dane County
 - (608) 240-7400 or adrc@countyofdane.com



Contact

Cheryl Batterman, MPA
Manager, Area Agency on Aging of Dane County
(608) 261-9789
batterman.cheryl@countyofdane.com

